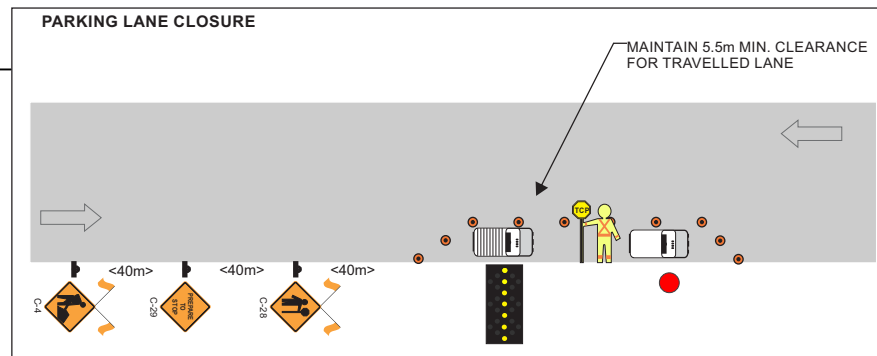
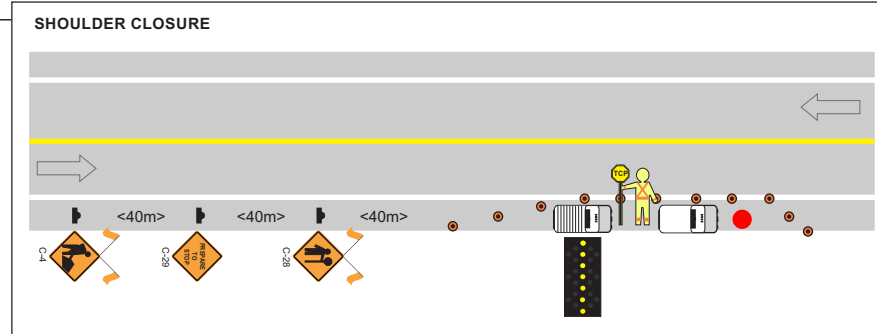
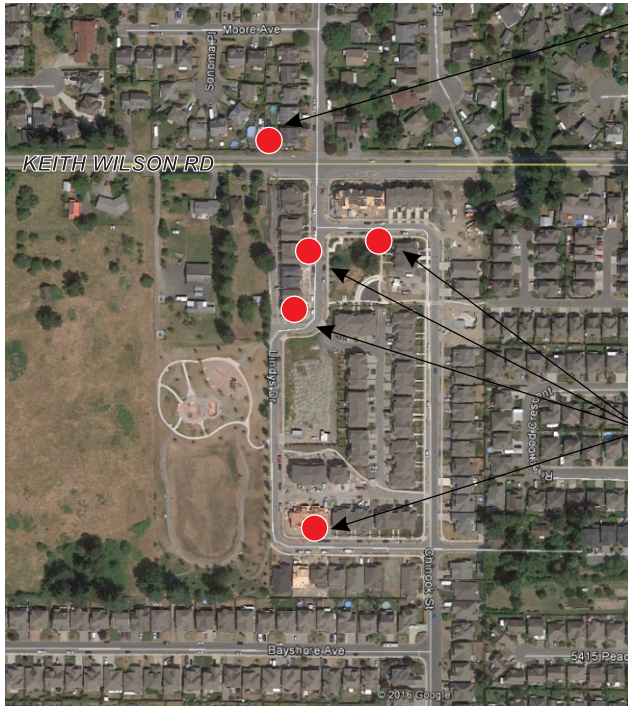




TABLE A
Positioning of devices on conventional roadways for various speed limits

* Regulatory speed limit	50 km/hr	60 km/hr	70 km/hr	80 km/hr	90-100 km/hr
1a Taper length for lane closure	35 (1:10)	55 (1:15)	75 (1:20)	90 (1:25)	110 (1:30)
1b Taper length for shoulder work or where TCPs are used	5	8	10	12	15
2 Maximum distance between cones or tubular markers	10	10	10	10	10
3 Minimum tangent distance between tapers	30	60	90	120	150
4 Distance between construction signs	40	60	80	100	150

Dimensions shown are in metres and are minimums except for 2*.
Cones and tubular markers are generally used in daylight but if used at night must be reflectorized. Barricades, flexible drums or temporary delineator posts are generally used during hours of darkness and must be reflectorized.
Dimensions 1b* apply to downstream tapers, shoulder tapers, and to two-way traffic tapers on travelled lanes where traffic is controlled by TCPs, portable lane control signals or temporary traffic signals.
Dimensions 4* represent the minimum advance placement distances for initial signs as well as distances between subsequent signs in multi-sign series.



LEGEND

- TRAFFIC CONTROL PERSON
- LANE CLOSURE TRUCK
- TRUCK MOUNTED FAB
- TRAFFIC CONE (DELINEATOR) TYPE 'D'
- TRAFFIC SIGN LOCATION
- WORK TRUCK
- WORK LOCATION

- NOTES:**
- Description & Location: Manholes access. Both way traffic to be maintained.**
 - Hours: per city's allowable hours.
 - The traffic control will be provided by 1 TCP and 1 lane closure vehicle with mounted Flashing Arrow Board and any traffic signalling that may be needed.
 - Sign location and spacing will be in conformity with the requirements of the Manual for Work on Roadways as published by the MoTH. Changes to layout of signage may be made by the TCP in charge to accommodate traffic and local conditions on site at the time.
 - Posted Speed Limit : **50 kph**
 - Signs to be mounted on HLWD

NOTE: This traffic plan is not an order of TCP and equipment. It is the Contractor's responsibility to order the resources required for this plan at least 24 hours prior to the works being performed. Call the contracted traffic control company dispatch to confirm your order.

ANSAN TRAFFIC CONTROL
Ansan Industries Ltd.
2600 Viking Way, Richmond,
British Columbia V6V 1N2
Tel: (604) 270-1541 Fax: (604) 270-1545
Email: plans@telus.net

CUSTOMER CONTACT:	FOCUS COMMUNICATIONS INC. PARVEEN AGGARWAL 604-529-1842
DATE:	2016-AUG-24
PLAN #:	PL 16-673 KEITH WILSON RD, VANDELL DR, CHINOOK ST, CHILLIWACK MANHOLE ACCESS
DWG BY:	CHRISTINE WONG
PAGES:	PG 1

THIS TRAFFIC PLAN HAS BEEN PREPARED BY ANSAN INDUSTRIES LTD. BASED, IN PART, ON INFORMATION PROVIDED BY THIRD PARTIES. EVERY EFFORT HAS BEEN MADE TO ENSURE THAT THE PLAN CONFORMS TO THE REQUIREMENTS OF THE MOTOR VEHICLE ACT [RSBC 1966] CHAPTER 318 AND REGULATIONS AND TO THE BC TRAFFIC CONTROL MANUAL. IMPLEMENTATION OF THIS PLAN WILL BE UNDER THE SUPERVISION OF ANSAN INDUSTRIES LTD. WHO TAKES NO RESPONSIBILITY FOR THE USES TO WHICH THIS PLAN IS PUT BY THIRD PARTIES NOT DIRECTLY UNDER THE SUPERVISION OF ANSAN INDUSTRIES LTD.